



FRAGRANCE  
COLLECTIONS  
FROM CARVANSONS

# EARTHLY BEAUTY SKINCARE COLLECTION



CARVANSONS

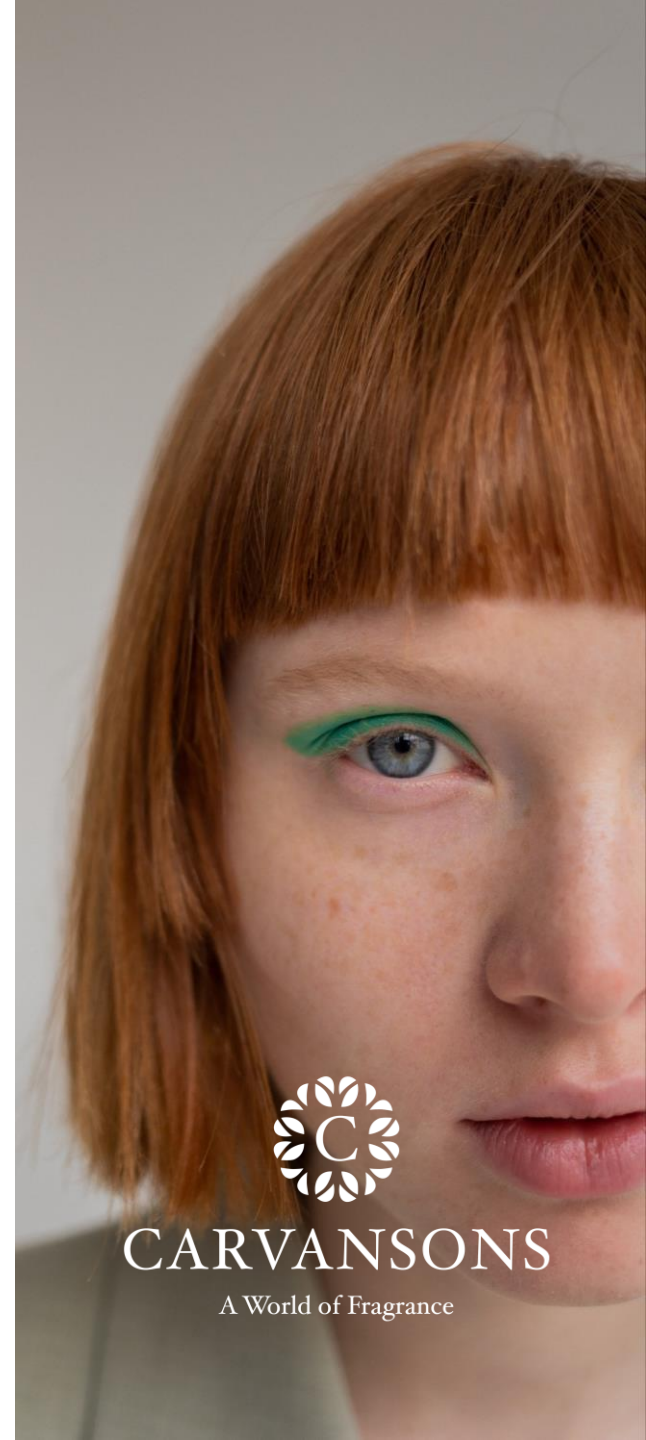
A World of Fragrance

# EARTHLY BEAUTY

Skincare inspired by natural and plant-based ingredients has become a huge market.

Harnessing the power of botanicals and natural products has become a clear selling message for many skincare and beauty ranges.

And whilst many of these products are not necessarily natural in origin, the scent is used to convey a natural, sensitive and botanical impression.



CARVANSONS

A World of Fragrance



# INSPIRED BY NATURE

Our carefully curated collection includes a range of alluring fragrances, inspired by some of these natural ingredients.

Herbaceous, botanical and other natural-inspired skincare scents have become incredibly popular.

In this collection, we have taken inspiration from natural and grounding fragrances that leave us feeling at one with the world.



CARVANSONS

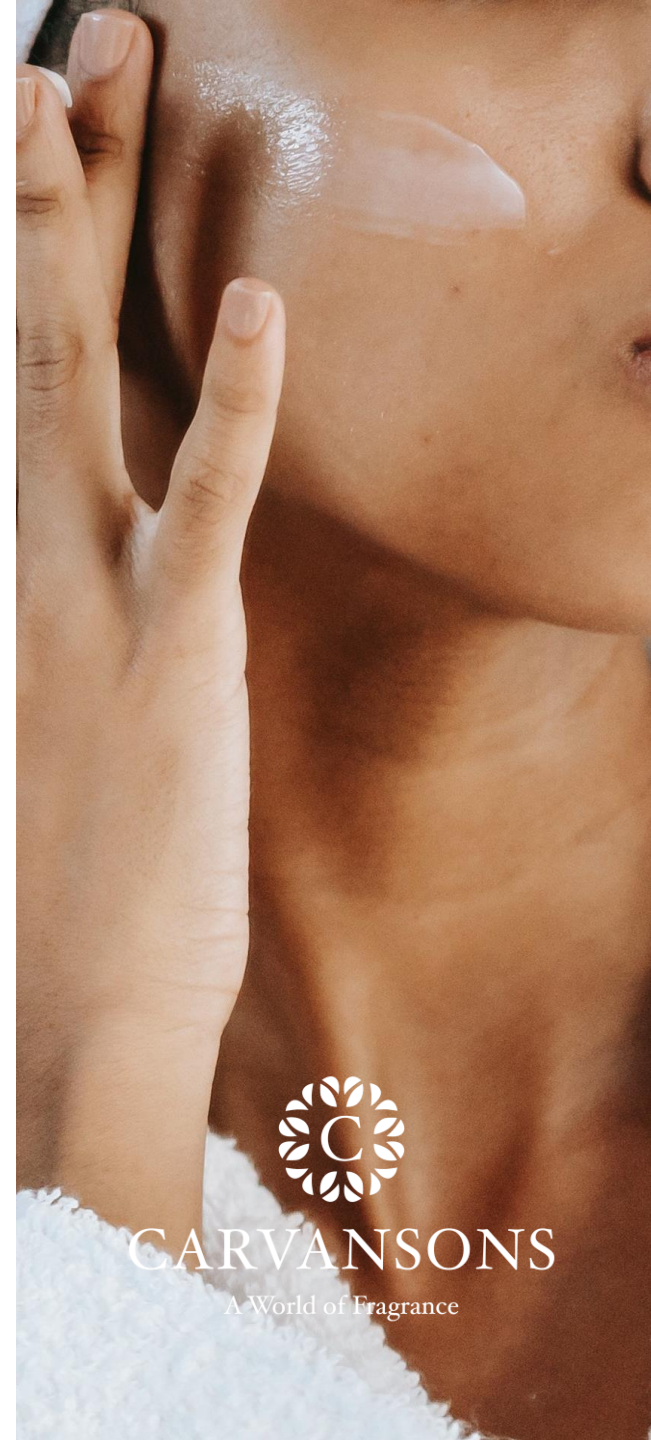
A World of Fragrance

# EARTHY BEAUTY COLLECTION

The Earthly Beauty Skincare Collection is a selection of six delicate, calming fragrances formulated specifically for cosmetics, personal care and skincare.

This Collection is suitable for:

- Skincare
- Body Lotions
- Face Creams



CARVANSONS

A World of Fragrance



FRAGRANCE  
COLLECTIONS  
FROM CARVANSONS

# EARTHLY BEAUTY SKINCARE COLLECTION



CARVANSONS

A World of Fragrance



# WHEATGRASS

*A calming yet fresh scent with earthy and aromatic undertones*

Top: Eucalyptus / Coconut / Citrus

Middle: Wheatgrass / Lemongrass / Almond

Base: Tonka / Vanilla



CARVANSONS

A World of Fragrance

## OLIVE VINE

*A herbaceous, green, fruity scent with mild florals and warming hints of Mediterranean sunshine*

Top: Green Vines / Galbanum / Aquatic Notes

Middle: Olive / Jasmin / Lily of the Valley / Ylang

Base: Woods / Amber



CARVANSONS

A World of Fragrance



# NETTLE AND GREEN TEA

*A wild, nature inspired fragrance with tingling herbals and agrestic earthy nuances.*

Top: Wild Mint / Green Tea /  
Lemon

Middle: Ginger, Caramel, Woods

Base: Nettle / Earthy Notes



**CARVANSONS**

A World of Fragrance



# GINSENG

*A zingy and refreshing scent that lifts and revives with fizzy ginseng and comforting sweet touches in the base*

Top: Orange / Bergamot /  
Mandarin

Middle: Rose / Jasmine

Base: Ginseng / Tonka / Musk /  
Woods



CARVANSONS

A World of Fragrance

# OATMILK

*A creamy and decadent scent with opulent and luxurious silky cream notes*

Top: Lily of the Valley / Rose

Middle: Oat / Almond /  
Mimosa

Base: Sandalwood / Orris



CARVANSONS

A World of Fragrance



# FEIJOA

*A fruity and tropical opening note with lingering mellow woods in the background.*

Top: Bergamot / Orange /  
Pineapple

Middle: Feijoa / Apple / Jasmine

Base: Patchouli / Tonka / Vanilla  
/ Sandalwood



**CARVANSONS**

A World of Fragrance



FRAGRANCE  
COLLECTIONS  
FROM CARVANSONS

# EARTHLY BEAUTY SKINCARE COLLECTION

For more information about our fragrances or to  
request samples of our latest creations, contact us

[hello@carvansons.co.uk](mailto:hello@carvansons.co.uk) | [www.carvansons.co.uk](http://www.carvansons.co.uk)



CARVANSONS

A World of Fragrance